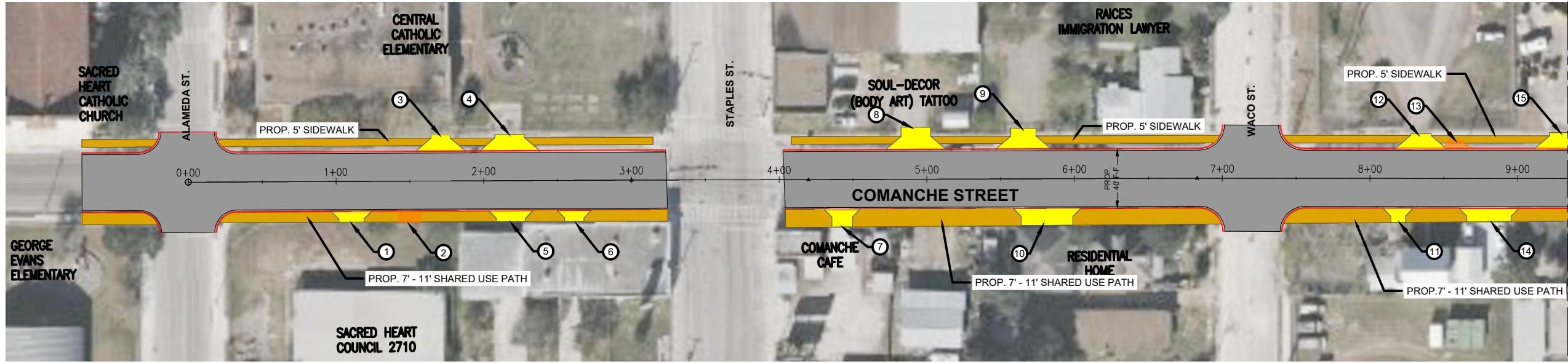
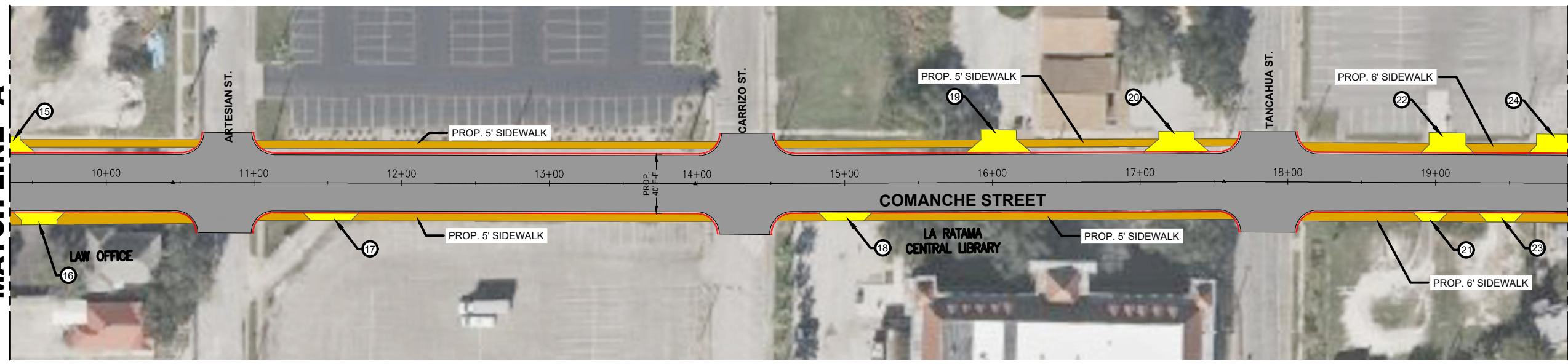


| | |
|---------|------------|
| LAYOUT | 10/28/2021 |
| REVISED | 10/28/2021 |
| DATE | 10/28/2021 |
| BY | 10/28/2021 |

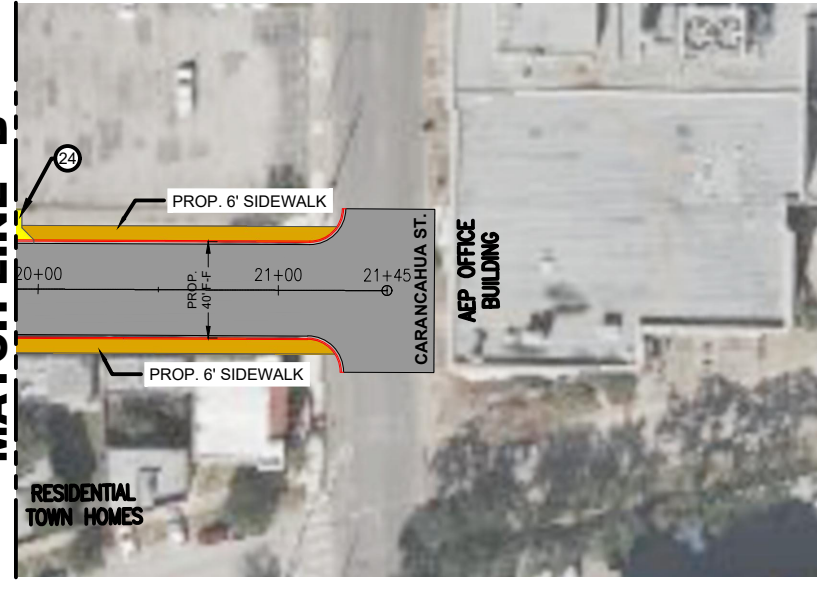


MATCH LINE "A"



MATCH LINE "A"

MATCH LINE "B"



MATCH LINE "B"

| DRIVEWAY SCHEDULE | | | | | |
|-------------------|-------------|---------------------|---------------------|----------------|----------------|
| NO | TYPE | EXISTING WIDTH (LF) | PROPOSED WIDTH (LF) | PROPOSED FLARE | ACTION ITEM |
| 1 | COMMERCIAL | 16.38 | 18 | | REMOVE/REPLACE |
| 2 | COMMERCIAL | 15.02 | - | | REMOVE |
| 3 | COMMERCIAL | 12.46 | 15 | | REMOVE/REPLACE |
| 4 | COMMERCIAL | 19.20 | 20 | | REMOVE/REPLACE |
| 5 | COMMERCIAL | 20.00 | 20 | | REMOVE/REPLACE |
| 6 | COMMERCIAL | 12.45 | 15 | | REMOVE/REPLACE |
| 7 | COMMERCIAL | 14.08 | 15 | | REMOVE/REPLACE |
| 8 | COMMERCIAL | 20.10 | 20 | | REMOVE/REPLACE |
| 9 | COMMERCIAL | 16.32 | 18 | | REMOVE/REPLACE |
| 10 | COMMERCIAL | 34.87 | 35 | | REMOVE/REPLACE |
| 11 | RESIDENTIAL | 9.83 | 10 | | REMOVE/REPLACE |
| 12 | COMMERCIAL | 13.42 | 15 | | REMOVE/REPLACE |
| 13 | COMMERCIAL | 10.78 | - | | REMOVE |
| 14 | RESIDENTIAL | 29.40 | 30 | | REMOVE/REPLACE |
| 15 | COMMERCIAL | 20.04 | 20 | | REMOVE/REPLACE |
| 16 | COMMERCIAL | 24.12 | 24 | | REMOVE/REPLACE |
| 17 | COMMERCIAL | 27.27 | 30 | | REMOVE/REPLACE |
| 18 | COMMERCIAL | 24.80 | 25 | | REMOVE/REPLACE |
| 19 | COMMERCIAL | 22.96 | 24 | | REMOVE/REPLACE |
| 20 | COMMERCIAL | 24.18 | 24 | | REMOVE/REPLACE |
| 21 | RESIDENTIAL | 12.72 | 15 | | REMOVE/REPLACE |
| 22 | COMMERCIAL | 24.87 | 25 | | REMOVE/REPLACE |
| 23 | RESIDENTIAL | 20.00 | 20 | | REMOVE/REPLACE |
| 24 | COMMERCIAL | 25.04 | 25 | | REMOVE/REPLACE |

LEGEND

- PROPOSED PAVEMENT
- PROPOSED SIDEWALK
- PROPOSED DRIVEWAY
- PROPOSED CURB WITH GUTTER
- EXISTING DRIVEWAY TO REMAIN
- DRIVEWAY DESIGNATED SCHEDULE NUMBER

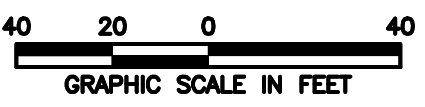


EXHIBIT B-1

DEC 22, 2021 12:05 PM P:\ARC00397
 F:\20A065\20A0249D\CAD\ROAD\DRIVEWAY\RECOMMENDEDPAV-DW-SHPLANDWG

| | | | |
|------------------------------------|------------|--|--|
| ENGINEERING LETTER REPORT | | CONSULTANT'S SHEET PROJECT NO. 20A0249D | THIS DOCUMENT IS RELEASED AS PART OF THIS REPORT FOR THE PURPOSE OF INTERIM REVIEW UNDER THE AUTHORITY OF MARCOS YBARRA, P.E. 100196 ON 08-28-21. IT SHALL NOT BE USED FOR CONSTRUCTION, BIDDING, OR PERMIT PURPOSES. |
| REVISION NO. | DATE | BY | DESCRIPTION |
| 1 | 12/22/2021 | CHRISTI | COMANCHE STREET N. CARANCAHUA STREET TO N. ALAMEDA STREET (BOND 2020) RECOMMENDED PAVEMENT, SIDEWALK AND DRIVEWAY PLAN |
| | | | HANSON Hanson Professional Services Inc. 2021 4501 Gollihar Rd. Corpus Christi, Texas 78411 TBP# F-417 / TBPL# F-1009500 TBR# F-5056 |
| | | | CITY OF CORPUS CHRISTI TEXAS Department of Engineering Services |
| SHEET 1 of 1 RECORD DRAWING NO. | | | CITY PROJECT # 21045 |