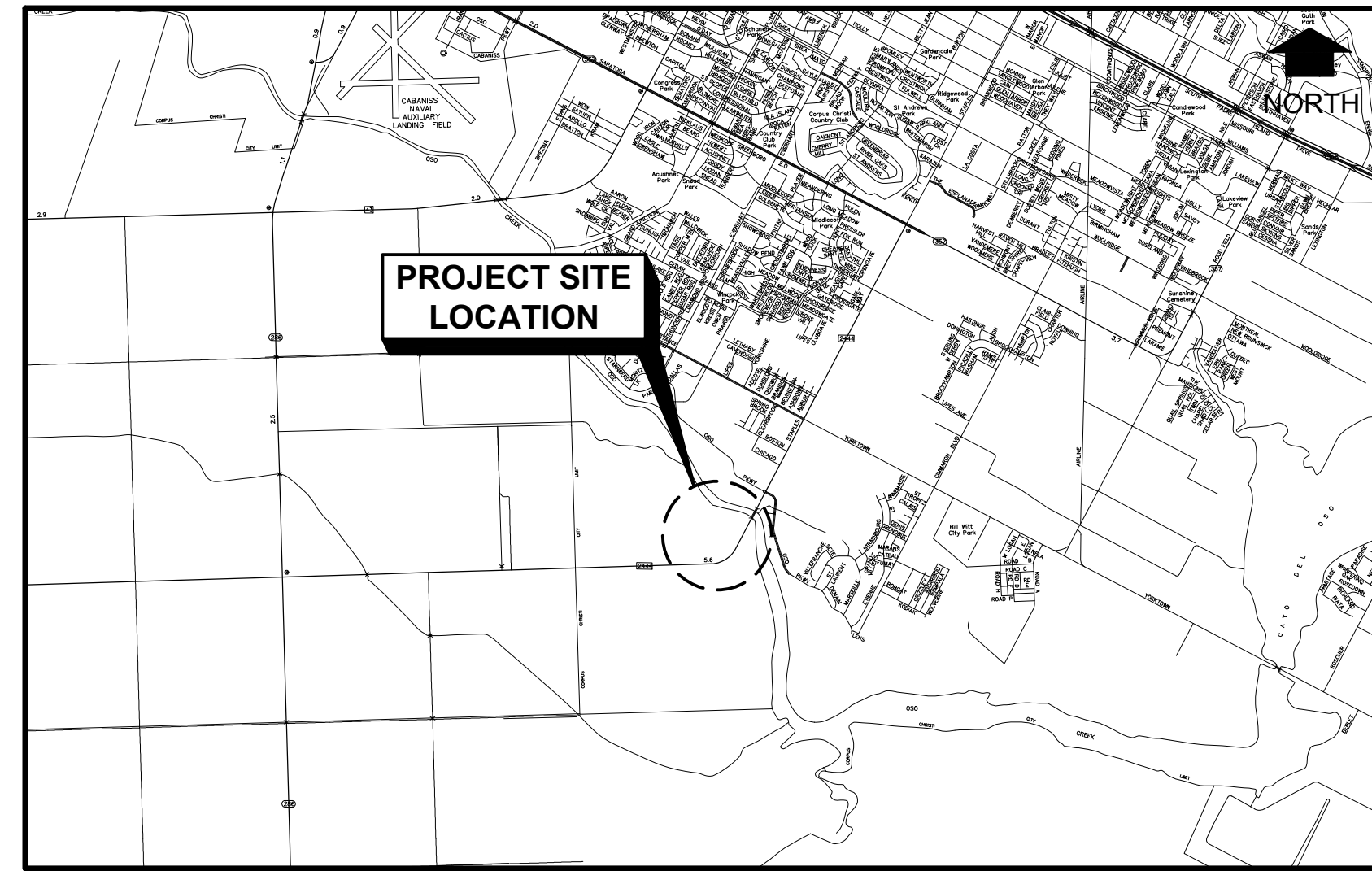
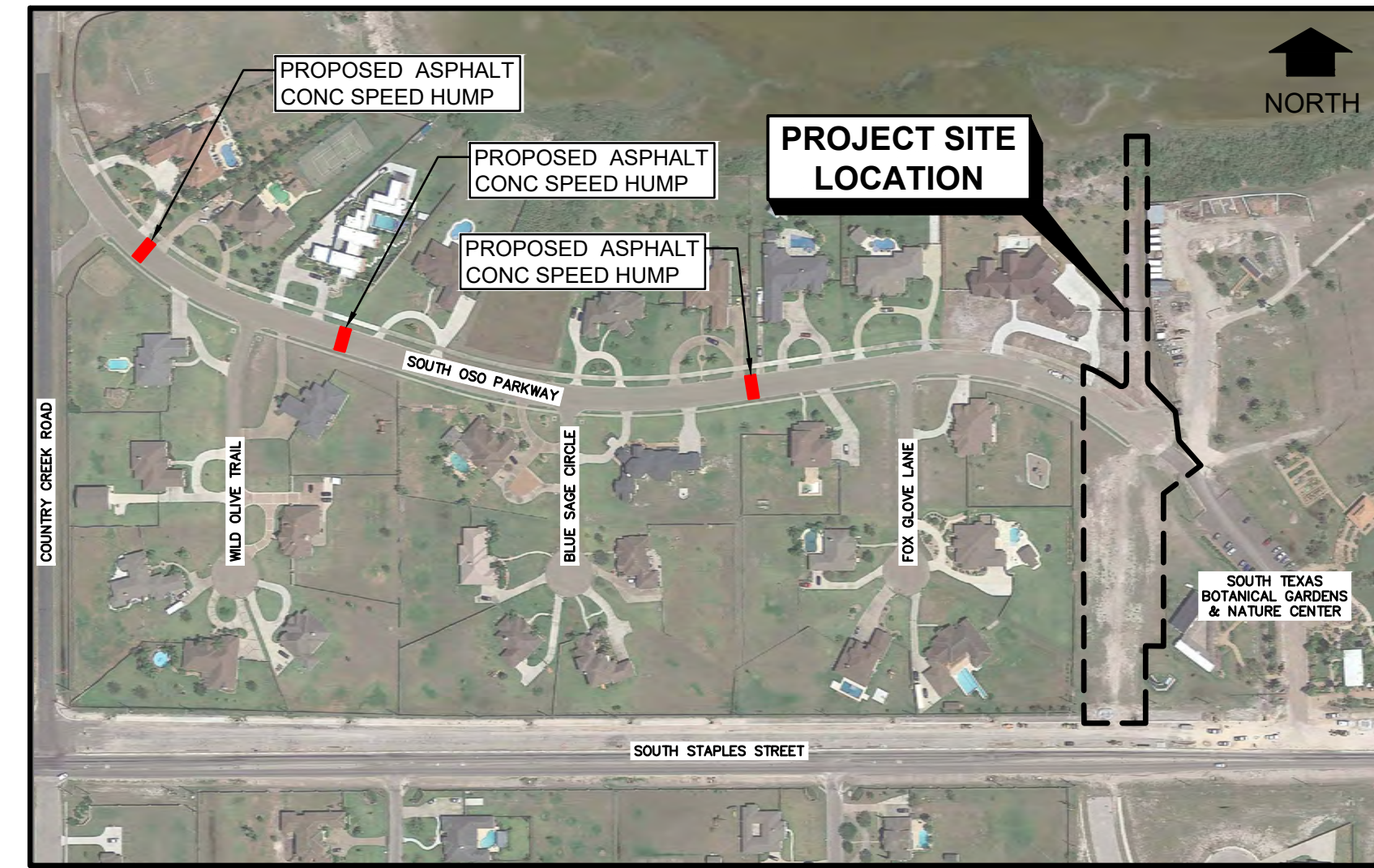


# PROJECT DESCRIPTION

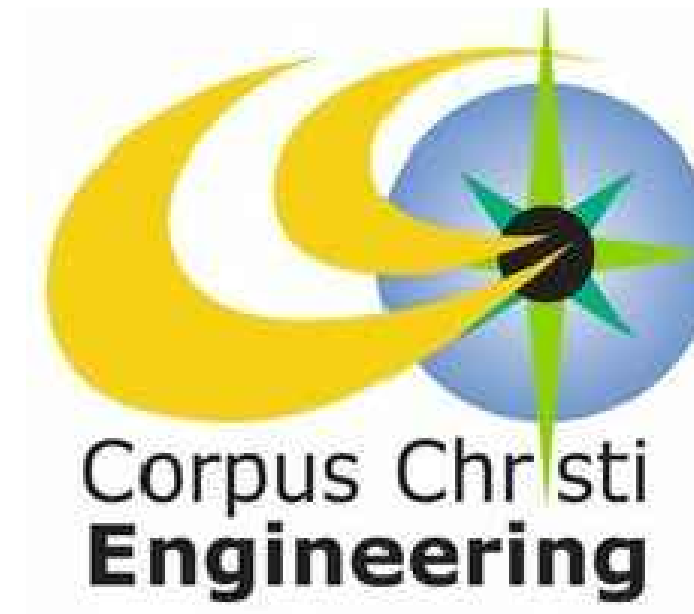
THE PROJECT WILL CONSIST OF THE EXTENSION OF SOUTH OSO PARKWAY TO EXISTING SOUTH STAPLES STREET. THE PROJECT WILL PROVIDE UNDERGROUND STORM SEWER, SINGLE 13-FOOT TRAVEL LANES IN EACH WAY AND A DEDICATED RIGHT TURN LANE AT STAPLES STREET, CURB AND GUTTER, 4-FOOT SIDEWALK ON WEST SIDE OF SOUTH OSO PARKWAY AND 8-FOOT SIDEWALK ON EAST SIDE OF SOUTH OSO PARKWAY. THREE (3) SPEED HUMPS WILL BE PLACED ALONG THE EXISTING SOUTH OSO PARKWAY. ALSO A NEW PARKING LOT FOR THE BOTANICAL GARDEN THAT WILL PROVIDE ACCESS THROUGH SOUTH OSO PARKWAY.



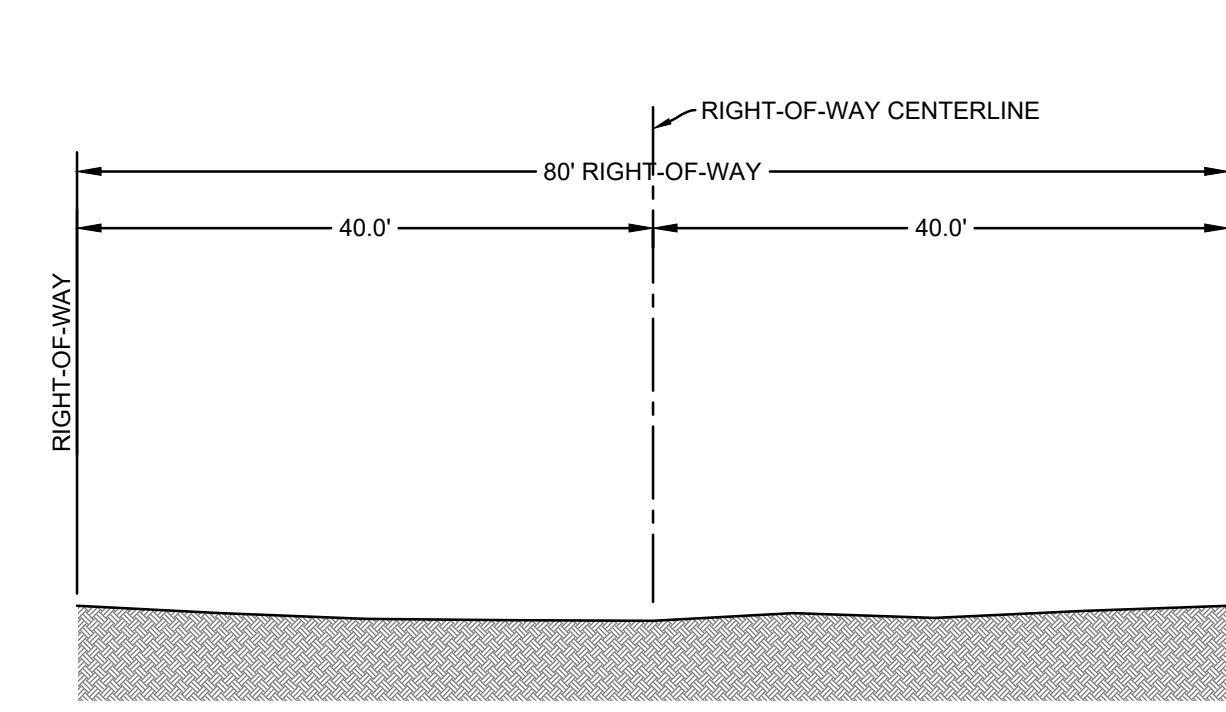
**VICINITY MAP**  
NOT TO SCALE



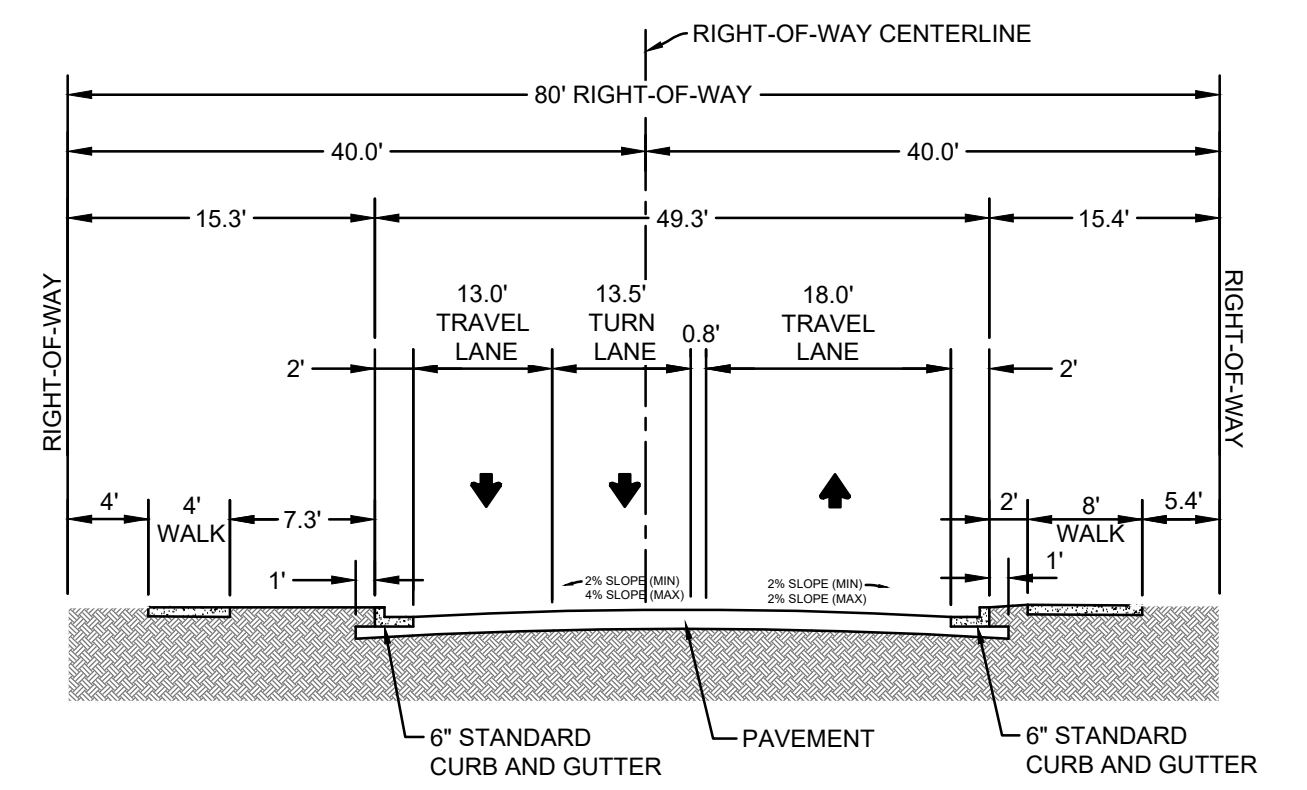
**LOCATION MAP**  
NOT TO SCALE



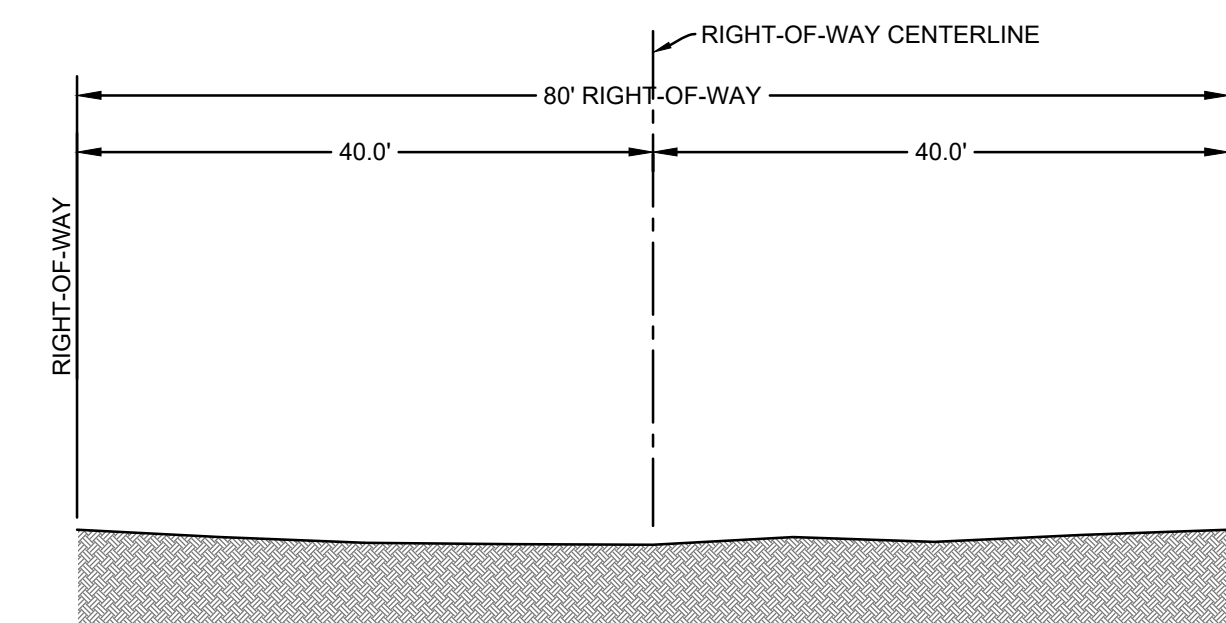
**ME** MUNOZ ENGINEERING  
 1608 S. BROWNLEE BOULEVARD  
 CORPUS CHRISTI, TX 78404  
 OFFICE: 361.946.4848  
 TBPELS FIRM F-12240  
 CIVIL | STRUCTURAL | MARINE | LAND DEVELOPMENT



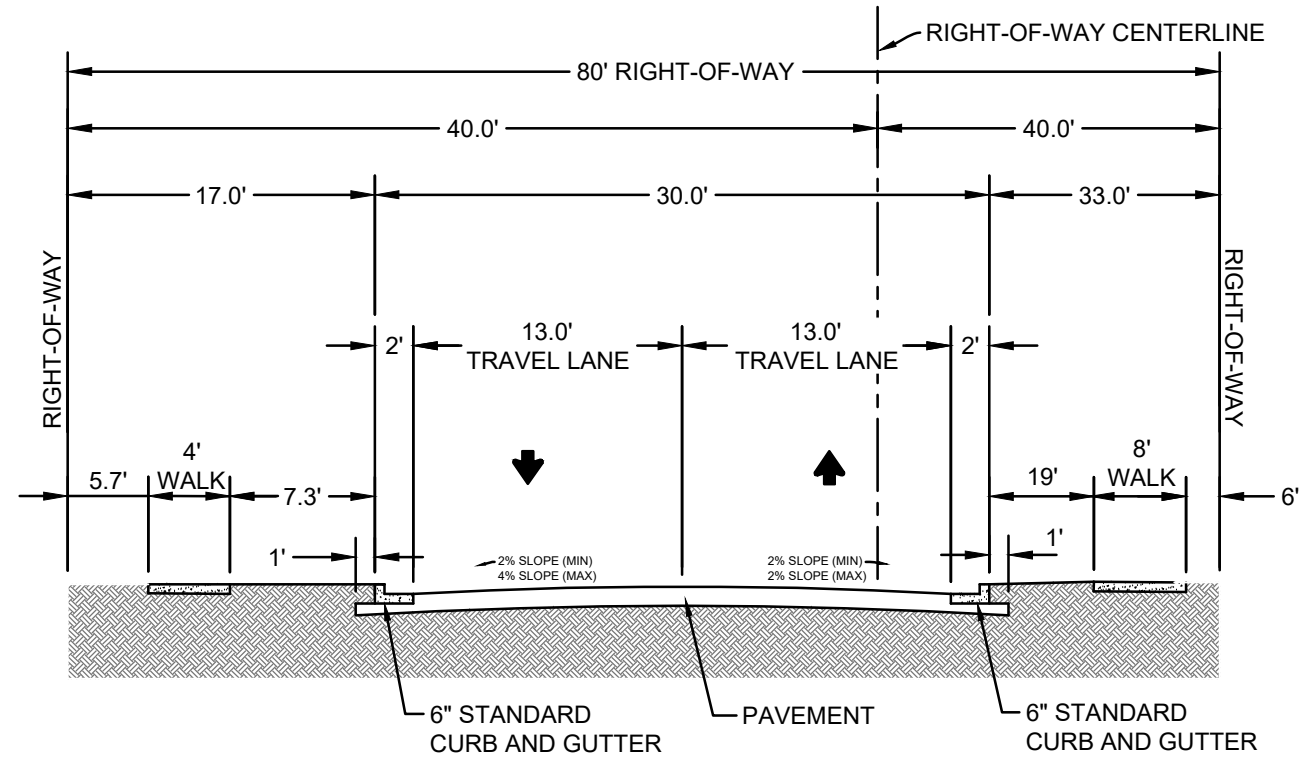
**A EXISTING TYPICAL SECTION**  
NOT TO SCALE



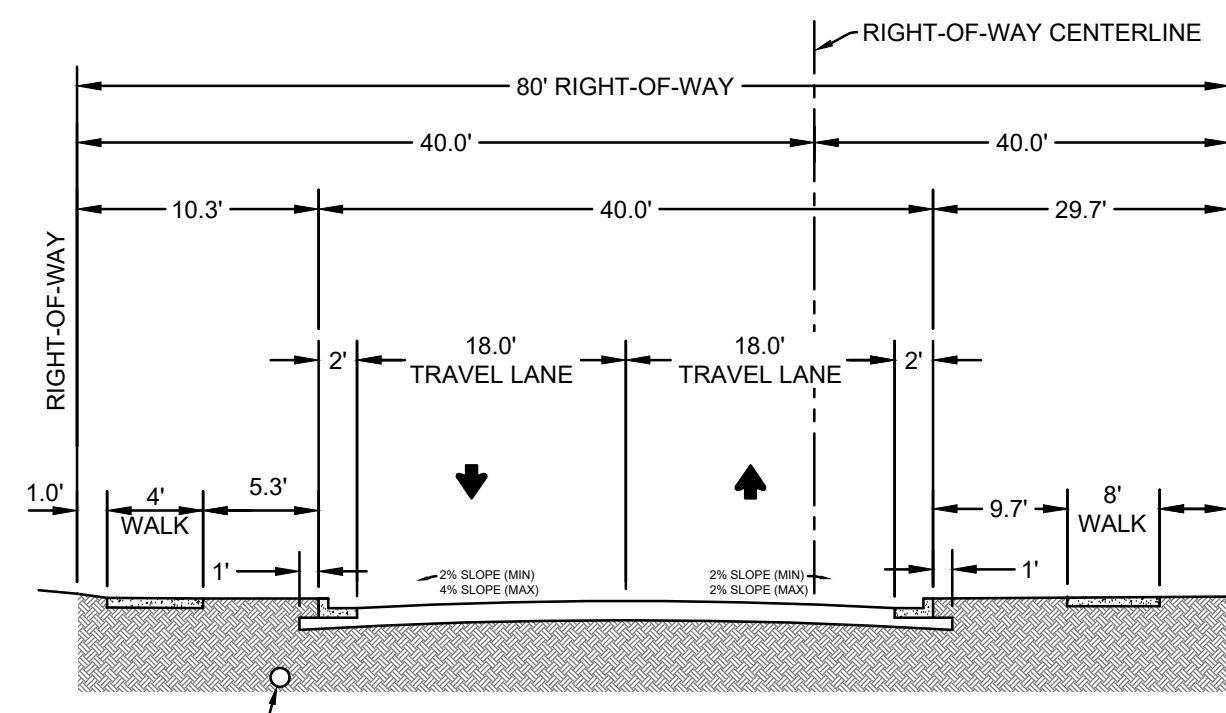
**A PROPOSED TYPICAL SECTION**  
NOT TO SCALE



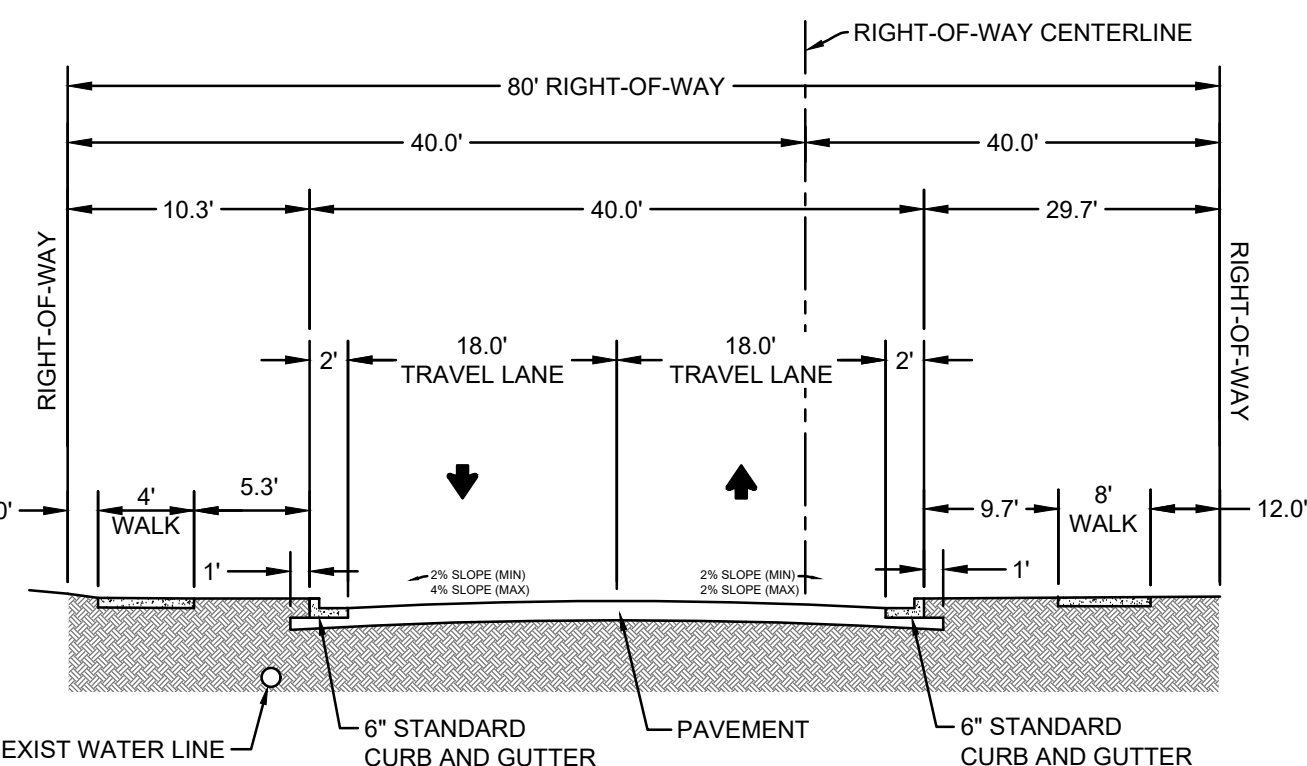
**B EXISTING TYPICAL SECTION**  
NOT TO SCALE



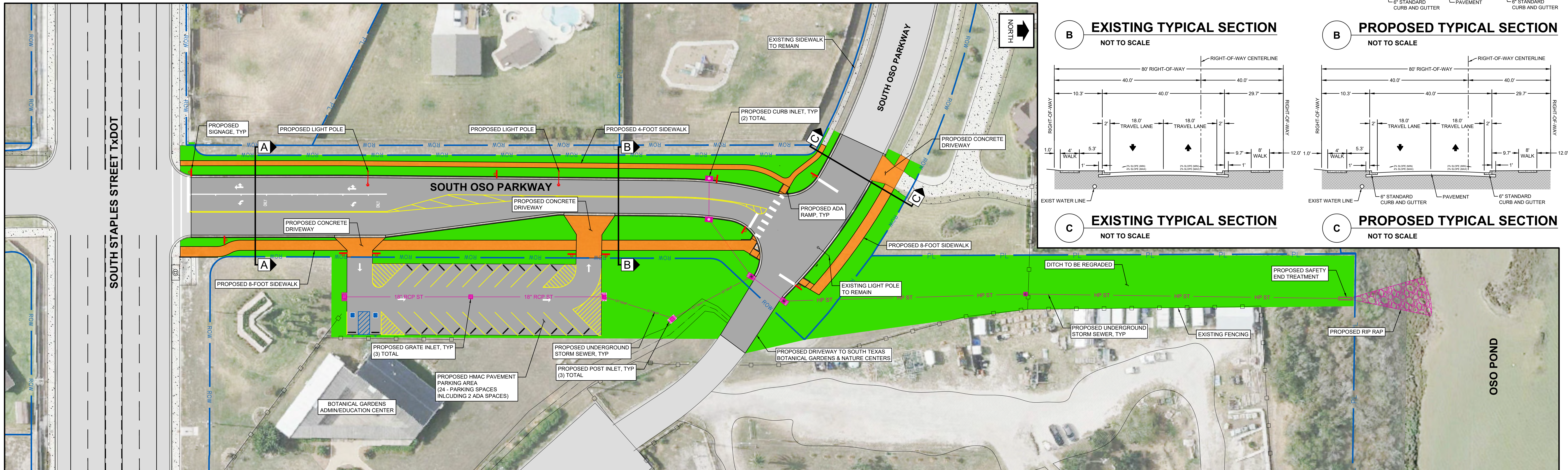
**B PROPOSED TYPICAL SECTION**  
NOT TO SCALE



**C EXISTING TYPICAL SECTION**  
NOT TO SCALE



**C PROPOSED TYPICAL SECTION**  
NOT TO SCALE



# SOUTH OSO PARKWAY IMPROVEMENTS